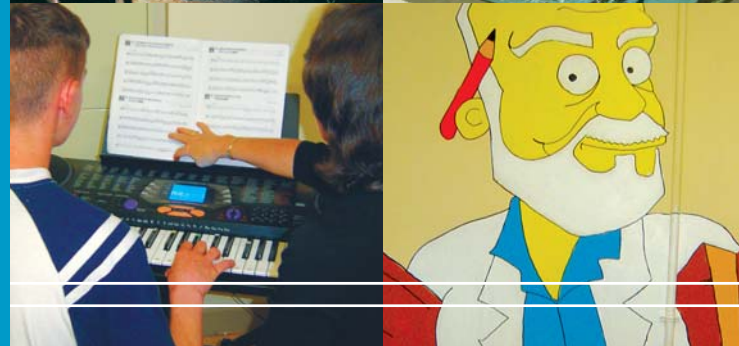


# Rules of the Centre

The Centre rules are very simple:

Respect for - Other young people  
Staff  
Property

- No physical violence toward anyone
- No bullying
- Join in routines and do as asked
- Join in programmes
- No smoking, drinking alcohol or taking drugs
- Dress as requested
- No graffiti



Your PACE Guide to  
Woodlands Juvenile Justice Centre

WOODLANDS JUVENILE JUSTICE CENTRE

1 Mosswood Close, Mosswood Avenue, Rathgael Road, Bangor, Co. Down, BT19 1TA.

Tel: 028 9185 4600

## PACE - Police and Criminal Evidence Order

You have been placed in the Juvenile Justice Centre in Bangor, by the police, to appear at the next available court.

The police will collect you and take you to that court, where you will either be remanded back into custody or released into the community.

If you have any concerns while you are here please ask staff. You may make a telephone call home and to your solicitor.

## Medical Department

As a young person you are entitled to healthcare facilities as you would be if you were at home. Within the Centre we have professionals who are here to help you with any health problems you may have.

## Bullying

The Centre will **not tolerate** any form of bullying. Bullying is anything which hurts you or makes you feel uncomfortable. If you think you are being bullied please tell a member of staff immediately.

## Care and Control

While you are in the Centre if you are in a crisis situation staff are trained to help you talk through your problems and reach a positive outcome.

If however, the situation escalates and you may be putting yourself or others at risk – through aggressive behaviours, physical intervention techniques may have to be used.

Staff will inform you if they intend to take hold of you and will keep you informed throughout. All staff are trained to physically control you safely without harm to yourself or others.



## Complaints

If you are unhappy and wish to make a complaint you can ask to speak to:

- Your key worker
- A team leader/duty team leader
- The unit manager/duty manager
- Night manager
- I.R.'s/Children's Commissioner/  
Children's Law Centre
- Or request a complaints form