



**Statistics & Research Branch**

**Youth Justice Agency  
Provisional Workload  
Statistics**

**April – September 2011**

Statistical Bulletin 5/2011

D Lyness and S Tate

Produced by the Youth Justice Agency Statistics &  
Research Branch

For further information write to:

**Statistics & Research Branch,  
Youth Justice Agency  
Waring Street,  
Belfast,  
BT1 2DY**

**Telephone: 028 9031 6400**

**Email: [info@yjani.gov.uk](mailto:info@yjani.gov.uk)**

This publication is also available on the Internet at:  
**[www.youthjusticeagency.cyni.gov.uk](http://www.youthjusticeagency.cyni.gov.uk)**

## Executive Summary

This report presents provisional workload statistics for the first six months of 2011/12 relating to the operational directorates of the Youth Justice Agency (YJA): the Youth Conference Service, the Community Services, and the Custodial Services. It provides descriptive analysis of trends on a range of young person demographics, including some Section 75 (see glossary section for further information) and care information. Quarterly figures may be subject to minor adjustment due to ongoing operational data revisions. Such revisions will be included in future quarterly reports and a final, end of year publication.

### KEY FINDINGS: APRIL - SEPTEMBER 2011

- ◆ The total number of statutory orders received by the YJA was 814. Fifty five per cent of these were diversionary youth conference plans and a further 37% were court ordered youth conference orders (Table 1).
- ◆ The total average daily population of the Juvenile Justice Centre (JJC) was 29. The average population was largely comprised of young people on remand (19) (Table 2)
- ◆ Initial admissions, that is, new admissions into the JJC, totalled 202. Admissions under PACE comprised 61% of this total and 35% of initial admissions were for 16 year olds. 15% of initial admissions were subject to a care order and a further 19% were voluntary accommodated in the care system (Table 4).
- ◆ There were 284 total admissions to the JJC. 48% of these were on remand; 37% were aged 16 and 33% were either on a care order or voluntary accommodated in the care system (Table 5).
- ◆ During April to September 2011 there were 26 young people sentenced to custody in the JJC. Twelve of these were aged 16. (Table 7).
- ◆ There were 905 referrals to the Youth Conference Service (YCS), 59% of which were diversionary referrals. Over a third (34%) of referrals were for 17 year olds or over and over a quarter (29%) were in the Belfast region (Table 8).
- ◆ The total number of youth conference plans approved was 747, 60% of which were diversionary youth conference plans (Table 10).
- ◆ Community Services (CS) received 446 new referrals and had an average active caseload of 797. At 30 September 2011, 785 young people were under supervision by CS, the majority of who were being supervised in the completion of a youth conference plan. Forty two per cent of the caseload were aged 17 years or over at time of admission (Tables 10-12).

<b>CONTENTS</b>	<b>PAGE</b>
<b>Executive Summary.....</b>	<b>i</b>
<b>Statutory Orders.....</b>	<b>1</b>
<b>Juvenile Justice Centre.....</b>	<b>1</b>
<b>Average Population.....</b>	<b>1</b>
<b>Maximum Population.....</b>	<b>2</b>
<b>Initial Admissions.....</b>	<b>3</b>
<b>Total Admissions.....</b>	<b>4</b>
<b>Initial Admissions by age and status.....</b>	<b>5</b>
<b>Total Admissions by age and status.....</b>	<b>6</b>
<b>Youth Conference Service.....</b>	<b>7</b>
<b>YCS Referrals .....</b>	<b>7</b>
<b>YCS Plans Approved.....</b>	<b>8</b>
<b>Community Services.....</b>	<b>9</b>
<b>Community Services Caseload.....</b>	<b>9</b>
<b>Community Services Caseload at 30 September 2011.....</b>	<b>10</b>
<b>Glossary.....</b>	<b>11</b>
<b>Other Publications.....</b>	<b>14</b>

## STATUTORY ORDERS

TABLE 1: YJA statutory orders 2008/09 – September 2011

	2008/09	2009/10	2010/11	2011/12 (April-September)
<b>Total</b>	1,565	1,639	1,746	814
<b>Attendance Centre Order (ACO)</b>	72	42	48	13
<b>Community Responsibility Order (CRO)</b>	48	43	49	27
<b>Reparation Order (RO)</b>	1	1	2	1
<b>Diversionsary Youth Conference Plan (YCP)</b>	759	815	859	445
<b>Youth Conference Order (YCO)</b>	646	701	748	302
<b>Sentenced to Juvenile Justice Centre</b>	39	37	40	26

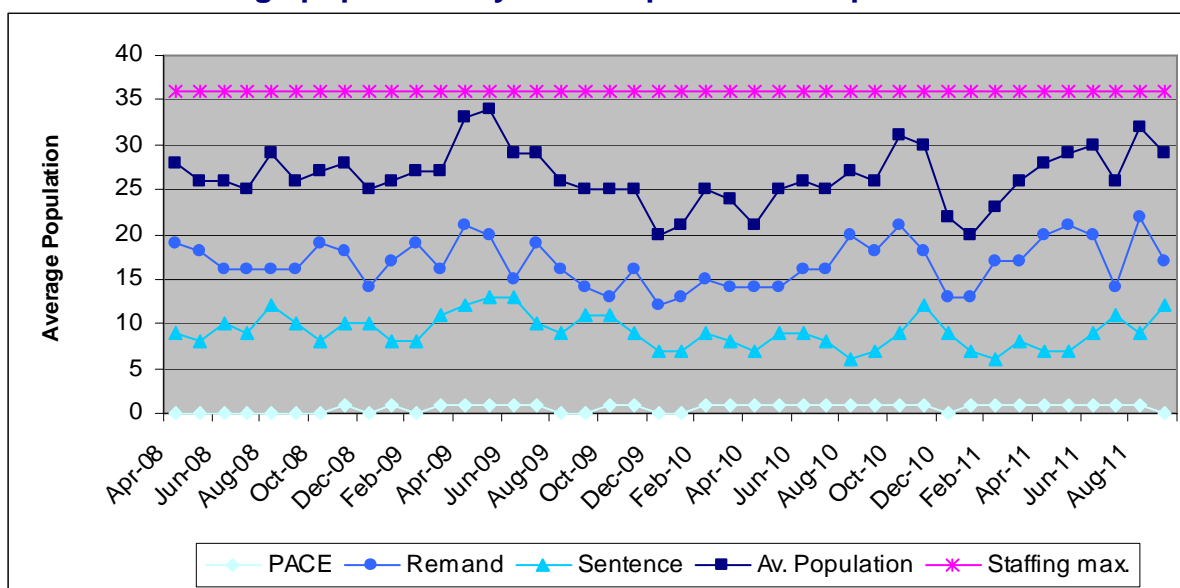
## JUVENILE JUSTICE CENTRE

TABLE 2: Average population by status and gender 2008/09 – September 2011

	2008/09	2009/10	2010/11	2011/12 (April-September)
<b>Total</b>	27	26	26	29
<b>PACE</b>	<1	1	1	1
<b>Remand</b>	17	15	17	19
<b>Sentence</b>	10	10	8	9
<b>Male</b>	24	25	24	26
<b>Female</b>	3	2	2	3

(1) figures may not sum due to rounding

FIGURE 1: Average population by status April 2008 – September 2011

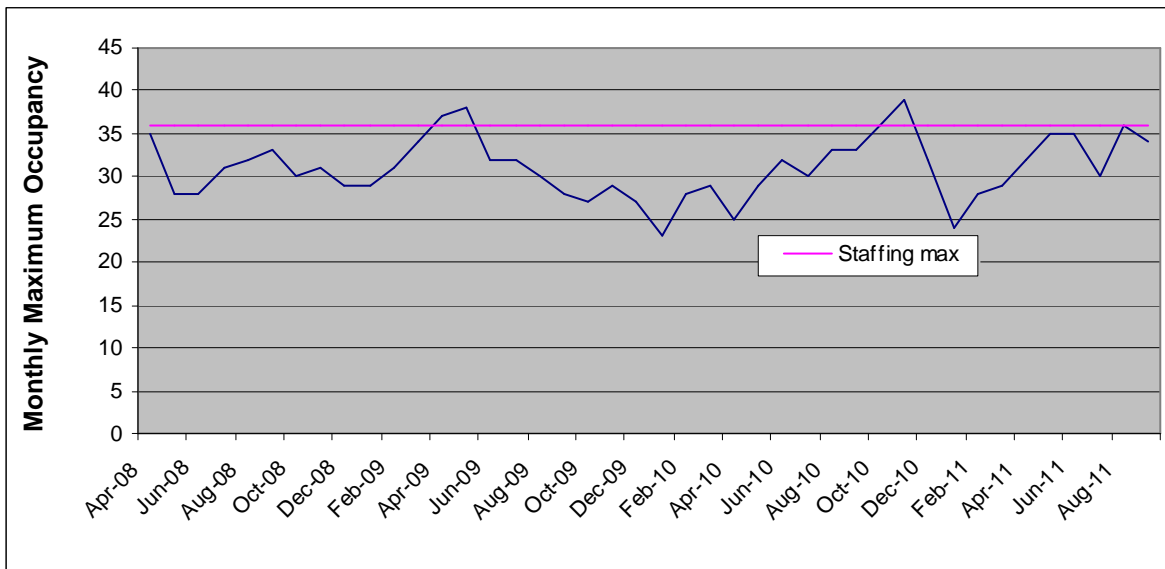


**TABLE 3: Maximum population by status and gender 2008/09 – September 2011**

	2008/09	2009/10	2010/11	2011/12 (April-September)
<b>Total</b>	39	38	39	36
<b>PACE</b>	3	7	6	7
<b>Remand</b>	25	24	29	26
<b>Sentence</b>	14	15	13	14
<b>Male</b>	36	36	34	32
<b>Female</b>	5	5	5	5

(1) figures represent the highest number on each category on any one day during the financial year

**FIGURE 2: Maximum monthly JJC population April 2008 – September 2011**



**TABLE 4: Initial admissions by demographic information 2008/09 – September 2011**

	2008/09		2009/10		2010/11		2011/12 (April-September)	
	N	%	N	%	N	%	N	%
<b>Total</b>	271	100	349	100	411	100	202	100
<b>Status</b>								
<b>PACE</b>	120	44	200	57	256	62	123	61
<b>Remand</b>	134	49	136	39	138	34	67	33
<b>Sentence</b>	17	6	13	4	17	4	12	6
<b>Gender</b>								
<b>Male</b>	225	83	307	88	347	84	173	86
<b>Female</b>	46	17	42	12	64	16	29	14
<b>Age</b>								
<b>10-13</b>	9	3	8	2	13	3	16	8
<b>14</b>	28	10	53	15	29	7	20	10
<b>15</b>	73	27	106	30	97	24	37	18
<b>16</b>	135	50	124	36	169	41	70	35
<b>17+</b>	26	10	58	17	103	25	59	29
<b>Religious Belief</b>								
<b>Protestant</b>	91	34	137	39	163	40	77	38
<b>Catholic</b>	169	62	192	55	234	57	115	57
<b>Other</b>	8	3	9	3	1	<1	1	<1
<b>No religious belief</b>	2	1	3	1	1	<1	2	1
<b>Unknown</b>	1	<1	8	2	12	3	7	3
<b>Looked After Status<sup>(1)</sup></b>								
<b>Subject to Care Order</b>	73	27	116	33	88	21	31	15
<b>Voluntary Accommodated</b>	-	-	10	3	65	16	38	19
<b>Not from Care</b>	196	72	221	63	251	61	130	64
<b>Unknown</b>	2	1	2	1	7	2	3	1

(1) Year on year comparisons should be made with caution due to changes in LAC categories and improved recording since 2008/09.

**TABLE 5: Total admissions by demographic information 2008/09 – September 2011**

	2008/09		2009/10		2010/11		2011/12 (April-September)	
	N	%	N	%	N	%	N	%
<b>Total</b>	357	100	474	100	551	100	284	100
<b><u>Status</u></b>								
<b>PACE</b>	120	34	200	42	256	46	123	43
<b>Remand</b>	198	55	237	50	255	46	135	48
<b>Sentence</b>	39	11	37	8	40	7	26	9
<b><u>Gender</u></b>								
<b>Male</b>	303	85	421	89	472	86	243	86
<b>Female</b>	54	15	53	11	79	14	41	14
<b><u>Age</u></b>								
<b>10-13</b>	13	4	10	2	18	3	24	8
<b>14</b>	35	10	72	15	36	7	25	9
<b>15</b>	100	28	140	30	130	24	49	17
<b>16</b>	180	50	182	38	229	42	106	37
<b>17+</b>	29	8	70	15	138	25	80	28
<b><u>Religious Belief</u></b>								
<b>Protestant</b>	125	35	192	41	220	40	106	37
<b>Catholic</b>	219	61	261	55	315	57	167	59
<b>Other</b>	10	3	9	2	2	<1	1	<1
<b>No religious belief</b>	2	1	4	1	1	<1	3	1
<b>Unknown</b>	1	0	8	2	13	2	7	2
<b><u>Looked After Status<sup>(1)</sup></u></b>								
<b>Subject to Care Order</b>	95	27	151	32	121	22	41	14
<b>Voluntary Accommodated</b>	1	<1	19	4	82	15	54	19
<b>Not from Care</b>	259	73	302	64	341	62	185	65
<b>Unknown</b>	2	1	2	<1	7	1	4	1

(1) Year on year comparisons should be made with caution due to changes in LAC categories and improved recording in 2008/09.

**TABLE 6: Initial admissions by age and status 2008/09 – September 2011**

	<i>2008/09</i>	<i>2009/10</i>	<i>2010/11</i>	<i>2011/12 (April- September)</i>
<b>Total</b>	<b>271</b>	<b>349</b>	<b>411</b>	<b>202</b>
<b><u>10-13</u></b>				
<b>PACE</b>	6	7	13	11
<b>Remand</b>	3	1	-	5
<b>Sentence</b>	-	-	-	0
<b><u>14</u></b>				
<b>PACE</b>	10	34	21	13
<b>Remand</b>	16	19	8	7
<b>Sentence</b>	2	-	-	0
<b><u>15</u></b>				
<b>PACE</b>	40	65	58	24
<b>Remand</b>	28	39	34	8
<b>Sentence</b>	5	2	5	5
<b><u>16</u></b>				
<b>PACE</b>	63	74	103	39
<b>Remand</b>	63	44	57	28
<b>Sentence</b>	9	6	9	3
<b><u>17</u></b>				
<b>PACE</b>	1	20	61	36
<b>Remand</b>	24	32	37	19
<b>Sentence</b>	1	5	3	4
<b><u>18</u></b>				
<b>PACE</b>	-	-	-	-
<b>Remand</b>	-	1	2	-
<b>Sentence</b>	-	-	-	-
<b><u>Total</u></b>				
<b>PACE</b>	120	200	256	123
<b>Remand</b>	134	136	138	67
<b>Sentence</b>	17	13	17	12

**TABLE 7: Total admissions by age and status 2008/09 – September 2011**

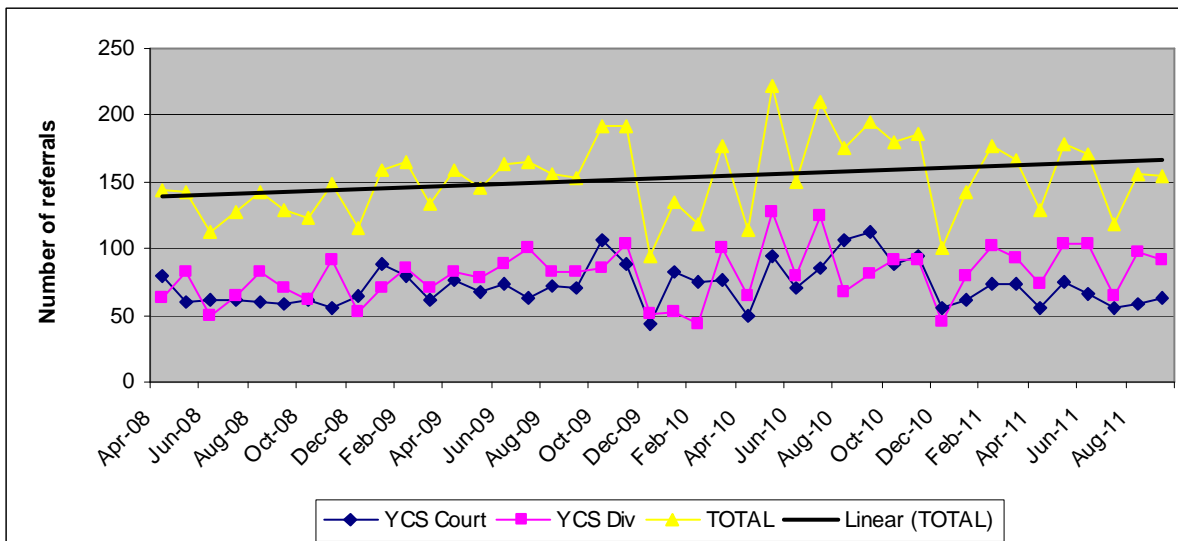
	<i>2008/09</i>	<i>2009/10</i>	<i>2010/11</i>	<i>2011/12 (April-September)</i>
<b>Total</b>	<b>357</b>	<b>474</b>	<b>551</b>	<b>284</b>
<b><u>10-13</u></b>				
<b>PACE</b>	6	7	13	11
<b>Remand</b>	7	3	5	12
<b>Sentence</b>	-	-	-	1
<b><u>14</u></b>				
<b>PACE</b>	10	34	21	13
<b>Remand</b>	21	35	14	12
<b>Sentence</b>	4	3	1	0
<b><u>15</u></b>				
<b>PACE</b>	40	65	58	24
<b>Remand</b>	50	70	65	20
<b>Sentence</b>	10	5	7	5
<b><u>16</u></b>				
<b>PACE</b>	63	74	103	39
<b>Remand</b>	96	89	110	55
<b>Sentence</b>	21	19	16	12
<b><u>17</u></b>				
<b>PACE</b>	1	20	61	36
<b>Remand</b>	24	39	59	36
<b>Sentence</b>	4	10	16	8
<b><u>18</u></b>				
<b>PACE</b>	-	-	-	-
<b>Remand</b>	-	1	2	-
<b>Sentence</b>	-	-	-	-
<b><u>Total</u></b>				
<b>PACE</b>	120	200	256	123
<b>Remand</b>	198	237	255	135
<b>Sentence</b>	39	37	40	26

## YOUTH CONFERENCE SERVICE

TABLE 8: YCS referrals 2008/09 – September 2011

	2008/09		2009/10		2010/11		2011/12 (April-September)	
	N	%	N	%	N	%	N	%
<b>Total</b>	1,636	100	1,840	100	2,012	100	905	100
<b>Type</b>								
Diversionary (PPS)	844	52	949	52	1,051	52	532	59
Court Ordered	792	48	891	48	961	48	373	41
<b>Gender</b>								
Male	1,402	86	1,494	81	1,681	84	726	80
Female	234	14	346	19	331	16	179	20
<b>Age</b>								
10-13	109	7	132	7	160	8	81	9
14	183	11	233	13	199	10	96	11
15	306	19	354	19	425	21	154	17
16	443	27	459	25	508	25	270	30
17+	595	36	662	36	720	36	304	34
<b>Region</b>								
Bangor, Ards, Lisburn	-	-	229	12	243	12	143	16
Belfast	766	47	427	23	627	31	263	29
North East	111	7	132	7	161	8	59	7
North West	273	17	274	15	265	13	114	13
PYOP	-	-	239	13	171	8	57	6
South East	305	19	317	17	311	15	148	16
South West	181	11	222	12	234	12	121	13

FIGURE 3: YCS referrals April 2008 – September 2011



**TABLE 9: YCS plan approved 2008/09 – September 2011**

	2008/09		2009/10		2010/11		2011/12 (April-September)	
	N	%	N	%	N	%	N	%
<b>Total</b>	1,405	100	1,516	100	1,611	100	747	100
<b>Type</b>								
Diversionsary (PPS)	759	54	815	54	861	53	445	60
Court Ordered	646	46	701	46	750	47	302	40
<b>Gender</b>								
Male	1,211	86	1,249	82	1,349	84	615	82
Female	194	14	267	18	262	16	132	18
<b>Age</b>								
10-13	72	5	90	6	106	7	49	7
14	145	10	181	12	135	8	63	8
15	223	16	285	19	293	18	109	15
16	389	28	364	24	417	26	213	29
17+	576	41	596	39	660	41	313	42
<b>CS Team<sup>(1)</sup></b>								
Ballymena & Antrim	57	4	86	6	121	8	46	6
Bangor	82	6	42	3	47	3	34	5
Belfast North	142	10	135	9	156	10	56	7
Belfast South & East	95	7	116	8	120	7	53	7
Belfast West	68	5	89	6	131	8	69	9
Coleraine & Limavady	72	5	75	5	110	7	54	7
Craigavon	146	10	140	9	133	8	56	7
Downpatrick	48	3	49	3	56	3	23	3
Enniskillen	34	2	51	3	63	4	33	4
Foyle & Strabane	111	8	110	7	91	6	44	6
Lisburn	77	5	100	7	104	6	34	5
Mid-Ulster	70	5	79	5	65	4	34	5
Newry & Armagh	77	6	73	5	87	5	42	6
Newtownabbey & Larne	78	5	75	5	89	6	44	6
Newtownards	60	4	66	4	38	2	33	4
Omagh	36	3	40	3	52	3	34	5
PYOP	-	-	154	10	134	8	44	6
Not referred to CS Team	152	11	36	2	14	1	14	2

(1) During 2007/08 the Community Services Directorate of YJA began to monitor and supervise youth conference plans to the position in 2010/11 that the vast majority of plans are supervised by Community Services.

## COMMUNITY SERVICES

**TABLE 10: CS Caseload 2008/09 - September 2011**

	2008/09	2009/10	2010/11	2011/12 (April-September)
<b>New admissions<sup>(1)</sup></b>	1006	1010	1019	446
<b>Average active casework (inc new referrals)<sup>(2)</sup></b>	729	781	790	797

(1) A new admission is defined as a new young person commencing supervision with the Community Services. Each Community Services admission may have one or more orders.

(2) Figures have been revised to include Priority Youth Offending Project (PYOP) cases and a correction to the active caseload previously quoted for 2010/11.

**TABLE 11: CS Caseload at 31 March and 30 September 2011<sup>(1)</sup>**

	<i>At 31 March 2011</i>		<i>At 30 September 2011</i>	
	N	%	N	%
<b>Total</b>	821	100	785	100
<b>Type</b>				
Statutory	781	95	761	97
Voluntary	40	5	24	3
<b>CS Team</b>				
Ballymena & Antrim	59	7	46	6
Bangor	30	4	26	3
Belfast North	88	11	82	10
Belfast South & East	86	10	82	10
Belfast West	43	5	48	6
Coleraine & Limavady	53	6	60	8
Craigavon	79	10	55	7
Downpatrick	34	4	31	4
Enniskillen	32	4	30	4
Foyle & Strabane	37	5	37	5
Lisburn	32	4	29	4
Mid-Ulster	43	5	35	4
Newry & Armagh	41	5	45	6
Newtownabbey & Larne	57	7	63	8
Newtownards	28	3	31	4
Omagh	30	4	39	5
PYOP	49	6	46	6

(1) Figures include PYOP caseload

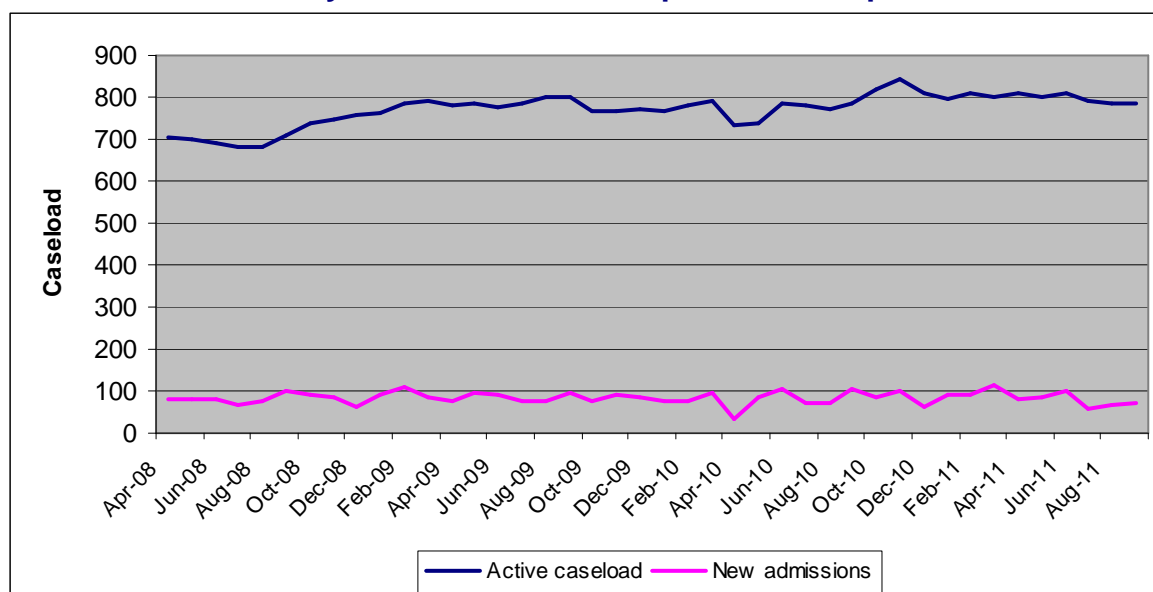
**TABLE 12: CS Caseload at 31 March and 30 September 2011<sup>(1)</sup>**

	31 March 2011		At 30 September 2011	
	N	%	N	%
<b>Total</b>	821	100	785	100
<b>Gender</b>				
Male	692	84	657	84
Female	129	16	128	16
<b>Age on Admission</b>				
10-13	48	6	50	6
14	79	10	69	9
15	159	19	128	16
16	215	26	210	27
17	218	27	233	30
18+	102	12	95	12
<b>Current Age<sup>(2)</sup></b>				
10-13	48	6	35	4
14	79	10	54	7
15	159	19	97	12
16	215	26	186	24
17	218	27	241	31
18+	102	12	172	22
<b>Religious Belief</b>				
Protestant	336	41	316	40
Catholic	411	50	365	46
Other	17	2	16	2
No religious belief	8	1	13	2
Unknown	49	6	75	10
<b>Looked After Status on Admission</b>				
Subject to Care Order	68	8	53	7
Voluntary Accommodated	41	5	34	4
Not from Care	700	85	638	81
Unknown	12	1	60	8

(1) Figures include PYOP caseload

(2) Current age indicates age at end of reporting period, e.g. 31 March 2011, 30 September 2011.

**FIGURE 4: Community Services caseload April 2008 – September 2011**



## GLOSSARY

## APPENDIX A

A brief description of some of the main terms used in the publication is given below.

### **Age of Criminal Responsibility**

The age of criminal responsibility in Northern Ireland is 10 years old, which means that from 10 onwards, a young person can be charged with criminal offences and brought before a court.

### **Upper Age Limit**

From September 2005, for criminal justice purposes, a young person is regarded as an adult when they reach the age of 18. This means that all those under the age of 18 accused of criminal activity are sent to youth courts.

### **Priority Youth Offender Project (PYOP)**

This two year pilot became operational in April 2009, covering the Greater Belfast region, including North Down, Ards and Downpatrick, Lisburn and South Antrim. It aims to deal with all youth offender referrals meeting criteria in relation to seriousness in terms of harm or persistence. Among its aims is the reduction of re-offending, creating efficiencies and increasing the confidence of the judiciary and the public through more co-ordinated and intensive intervention in the lives of young people, their families and communities.

### **Section 75**

Section 75 of the Northern Ireland Act 1998 requires Northern Ireland public authorities to “have due regard to the need to promote equality of opportunity; between persons of different religious belief, political opinion, racial group, age, marital status or sexual orientation; between men and women generally; between persons with a disability and persons without; and between persons with dependants and persons without.

### **Non-Custodial Disposals supervised by the Youth Justice Agency**

#### **Youth Conference Order (YCO)**

Youth conferencing aims to balance the needs of the victim and the young offender by agreeing plans of action which satisfy the victim and create opportunities for the young person to make amends and stop committing crime. A referral to the Youth Conference Service can be made either by diversion via the new public prosecution service, or at court at the point of sentencing. In either case the child must admit the offence and be willing to take part in the conference. The conference agrees a plan for the child to complete comprising of various elements relevant to the child, the impact of the offence and their offending behaviour. The period of the plan must not be more than one year. A plan resulting from a court-ordered conference, subsequently agreed by the court, will form the basis of a youth conference order.

#### **Diversionsary Youth Conference Plan (YCP)**

The decision whether or not to refer a young person to a diversionsary conference is for the Public Prosecution Service to make, but these conferences can only take place where the offender has admitted the offence. A diversionsary conference is a meeting or a series of meetings held to consider how a young person should be dealt with for an offence. A conference plan will be produced, which will be presented to the prosecutor for their approval. If

the prosecutor accepts the plan, it must then be complied with by the young offender. However, if the young offender fails to comply or the prosecutor doesn't accept the plan, then the prosecutor can refer the case to court.

### **Attendance Centre Order (ACO)**

An attendance centre order requires an offender, aged under 18, to attend a designated attendance centre and undertake a structured programme of activities. The order should not be less than 12 hours and no more than 24 hours. The times at which the offender attends the centre should avoid interference, so far as practicable, with school hours or working hours.

### **Reparation Order (RO)**

The order requires the offender to make reparation either to the victim of the offence or some other person affected by it, or to the community at large. The order may currently be made only where the offender is under the age of 18 years. An order must not require the offender to make reparation for more than 24 hours or to make reparation to any person without their consent. Forms which reparation might take could be, for example, repairing property which has been damaged or removing graffiti.

### **Community Responsibility Order (CRO)**

The order is a form of community service which may be imposed on a child, currently under the age of 18, and combines a specified number of hours to be spent on practical activities and instruction on citizenship. The aggregate number of hours specified in the order must not be less than 20 and not more than 40. In addition, the number of hours spent on instruction in citizenship must not be less than one half of the aggregate number of hours in the order.

### **Custody**

Young People may be held either on:

#### **PACE**

These young people are held under the Police and Criminal Evidence Order 1989 until they can be questioned by Police or until a court date becomes available.

#### **Remand**

Remanded in custody either awaiting trial or sentence.

#### **Sentence**

Held in custody as a result of a sentence of criminal court. Persons committed in default of a payment of a fine are normally included in this group. The majority of young people sentenced to the Juvenile Justice Centre will be given a Juvenile Justice Centre Order (JJCO).

### **Juvenile Justice Centre Order (JJCO)**

This order was introduced on 31st January 1999 under the Criminal Justice (children) (Northern Ireland) Order 1998, to replace the training school order. It is available for children under the age of 17 and is for a period of six months unless the court specifies a longer period not exceeding two years. The period of detention is for one half of the period of the order, with the

remainder comprising a period of close supervision in the community.

### **Bail Support**

The Youth Justice Agency provides Bails Support services to young people. This option is offered as an alternative to Remand in Custody, which means that the court can consider bail, even where there are 'substantial grounds' for refusal.

**OTHER PUBLICATIONS****APPENDIX B**

The following is a list of research and statistical outputs that have been published by YJA Statistics and Research Branch:

01/2011	Northern Ireland Youth Re-Offending: Results from the 2007 Cohort D Lyness & S Tate	June 2011
02/2011	Northern Ireland Youth Re-Offending: Results from the 2008 Cohort D Lyness & S Tate	July 2011
03/2011	Youth Justice Agency Annual Workload Statistics 2010/11 S Tate & D Lyness	July 2011
04/2011	Youth Justice Agency Provisional Workload Statistics April - June 2011 D Lyness & S Tate	August 2011